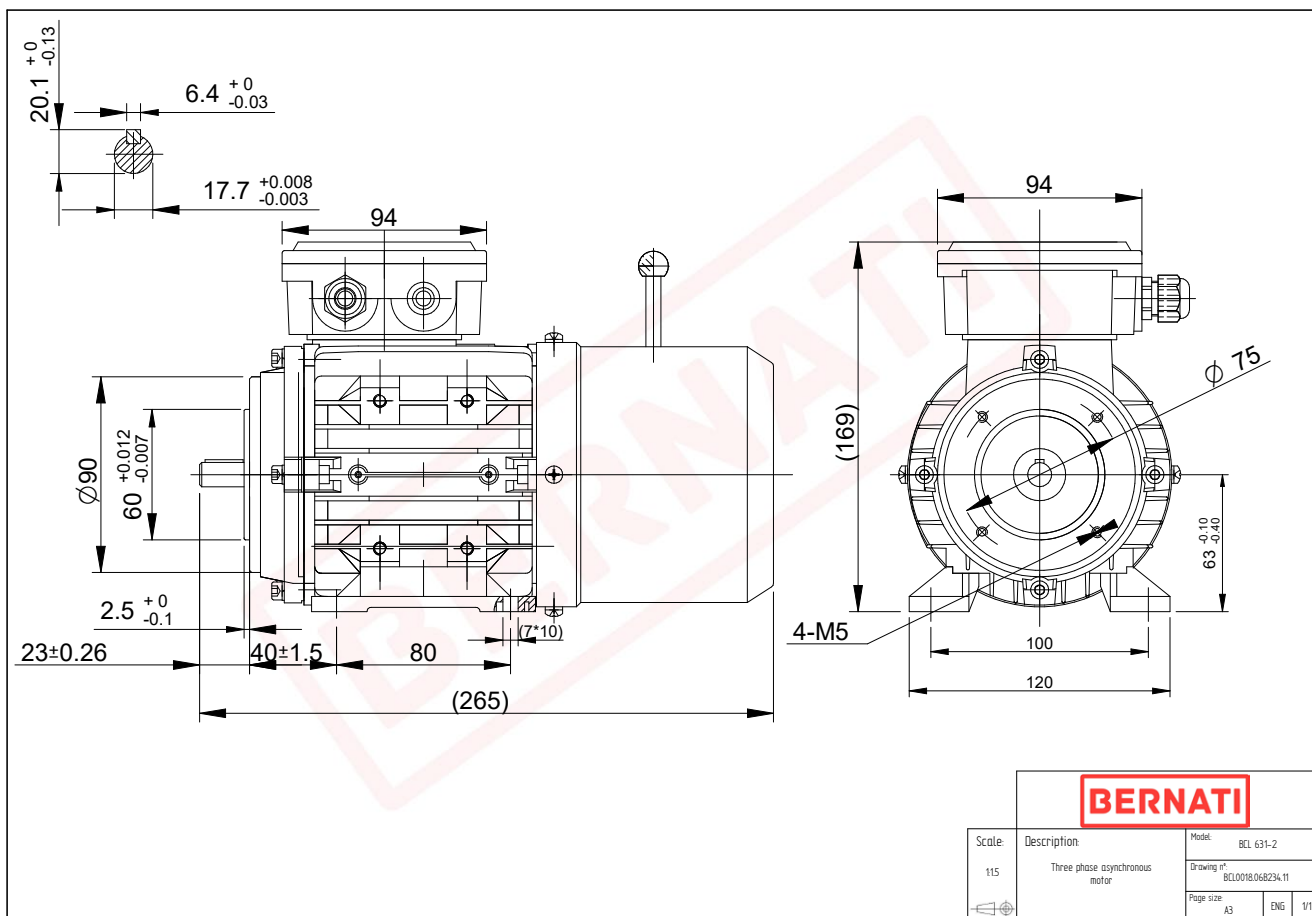


Technical Datasheet

BERNATI

BCL Series - Aluminum frame three phase low voltage electric motor



BCL

Product Code	BCL0018.06B234.11
Motor Type/Frame	BCL 631-2
Mounting	IM B3/B14
Output Power (kW)	0.18
Speed (rpm)	2780
Tension (V)	230/400
Frequency (Hz)	50
Current (A)	0.50
Power factor (Cos Ø)	0.80
Poles	2
Insulation Class	F
IP Class	IP55
50% Efficiency	56.8
75% Efficiency	64.2
100% Efficiency	66.5
Tstart / Tnominal	2.30
Istart / Inominal	4.10
Tmax / Tnominal	2.50
Noise (dB)	61
PTC Thermistor	N/A
Weight (Kg)	5
DE Bearing	6201 2RZ C3
NDE Bearing	6201 2RZ C3