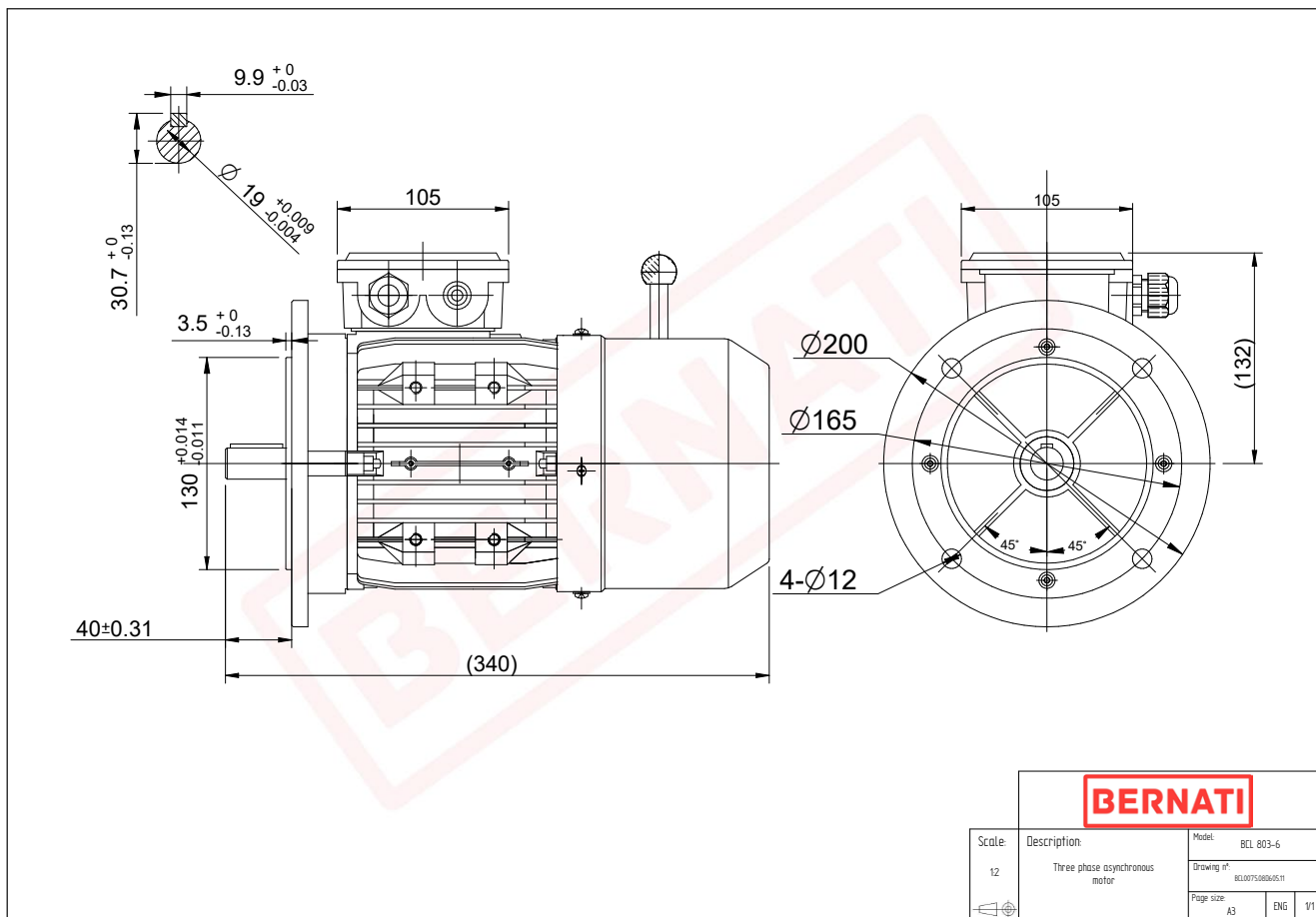


Technical Datasheet

BERNATI

BCL Series - Aluminum frame three phase low voltage electric motor



BCL

Product Code	BCL0075.08D605.11
Motor Type/Frame	BCL 803-6
Mounting	IM B5
Output Power (kW)	0.75
Speed (rpm)	910
Tension (V)	230/400
Frequency (Hz)	50
Current (A)	2.00
Power factor (Cos Ø)	0.70
Poles	6
Insulation Class	F
IP Class	IP55
50% Efficiency	71.3
75% Efficiency	74.2
100% Efficiency	72.9
Tstart / Tnominal	2.20
Istart / Inominal	4.10
Tmax / Tnominal	2.40
Noise (dB)	58
PTC Thermistor	N/A
Weight (Kg)	14
DE Bearing	6204 2RZ C3
NDE Bearing	6204 2RZ C3