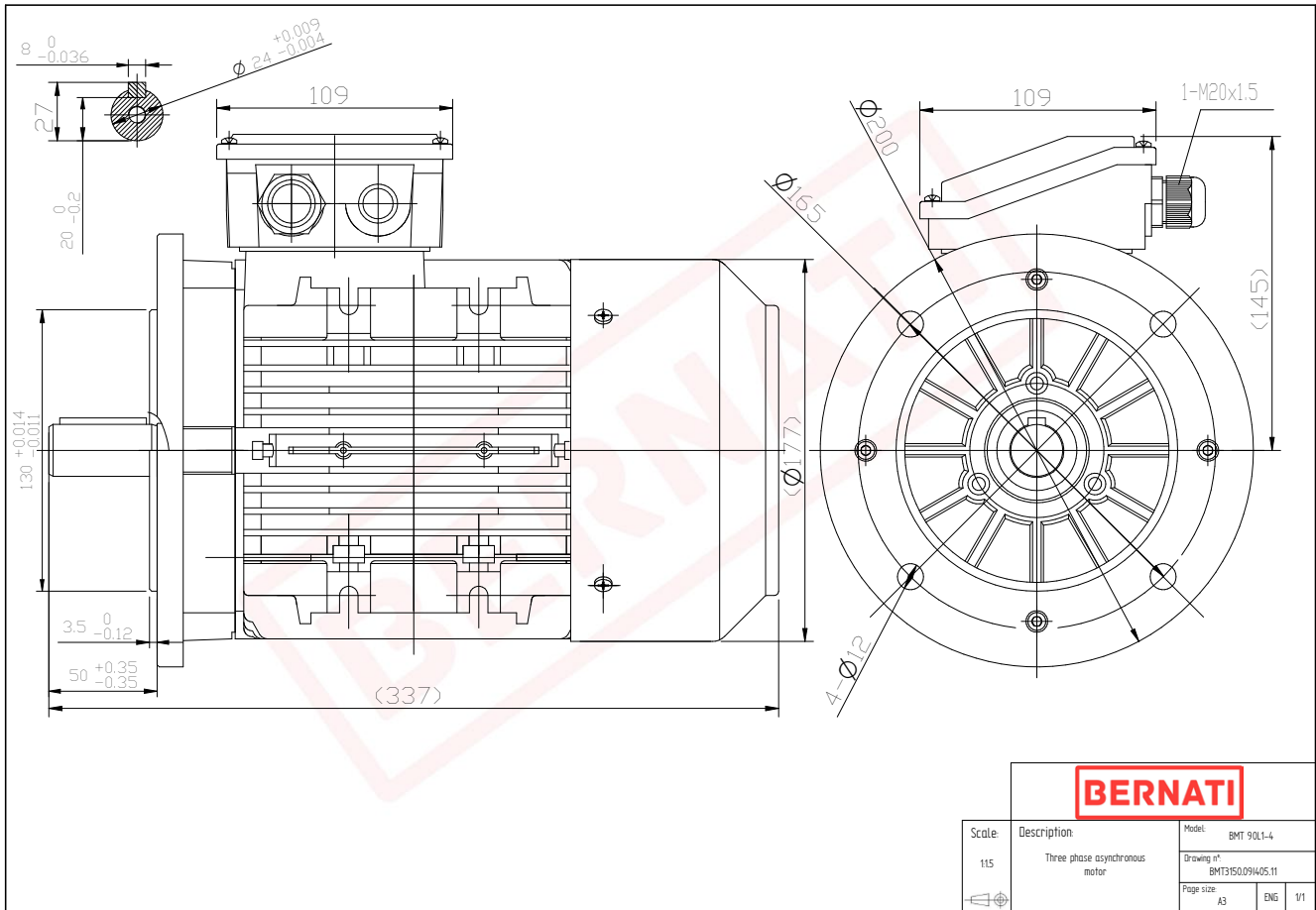


Technical Datasheet



BMT Series - Aluminum frame three phase low voltage electric motor



BMT	
Product Code	BMT3150.091405.11
Motor Type/Frame	BMT 90L1-4
Mounting	IM B5
Efficiency Class	IE3
Output Power (kW)	1.50
Speed (rpm)	1440
Tension (V)	230/400
Frequency (Hz)	50
Current (A)	3.48
Power factor (Cos Ø)	0.73
Poles	4
Insulation Class	F
IP Class	IP55
50% Efficiency	83.1
75% Efficiency	85.3
100% Efficiency	85.3
Torque (Nm)	9.95
Tstart / Tnominal	4.10
Istart / Inominal	8.10
Tmax / Tnominal	4.10
Noise (dB)	61
PTC Thermistor	PTC 130
Weight (Kg)	18
DE Bearing	6205 2RZ C3
NDE Bearing	6205 2RZ C3